

# MVE-FD “Flanged Drive”



**DESIGNED FOR  
HORIZONTAL AND INCLINED  
VIBRATING SCREENS**



## EASY MAINTENANCE

Straightforward, intuitive design: by eliminating the requirements for hydraulic power and external drive units, removing the drive is quick and easy requiring only a few basic tools to unscrew the fastening bolts. Grease for life; easy change of the vibration intensity



## QUICK INSTALLATION

“Plug & play” installation process compared to traditional drive systems: all the necessary drive components are already included inside the drive itself



## BUILT TO LAST

The robust design and the first class materials ensure a long life

**VIBRATORS FOR  
QUARRY & MINING,  
RECYCLING**



## MVE-FD 6 poles - 50Hz / 60Hz



Unbalance (InLb)	Model	Size	Poles	Centrifugal Force	rpm	Weight
				Lb		Lb
60 Hz	60hz US.Market			60 Hz	60 Hz	60 Hz
284.0	MVE 11700/6N-FD-80AX A	80	6	11,606	1,200	440.9
349.6	MVE 14500/6N-FD-80AX A	80	6	14,288	1,200	509.3
459.2	MVE 19000/6N-FD-90BP A	90	6	18,764	1,200	727.5
658.8	MVE 27000/6N-FD-91BP A	91	6	26,922	1,200	853.2

ELECTRIC FEATURES			
input power	Nominal Current	Ia/In	Cable Gland
Hp	A		
60 Hz	60 Hz [460]	60 Hz	
	A max. (Y)		
4.8	6.9	4.3	M25
7.8	10.5	5.3	M25
	A max. (Δ)		
8.6	12.7	6.4	M32
10.1	12.9	6.4	M32



## MVE-FD 8 poles - 50Hz / 60Hz



Unbalance (InLb)	Model	Size	Poles	Centrifugal Force	rpm	Weight
				Lb		Lb
60 Hz	60hz US.Market			60 Hz	60 Hz	60 Hz
349.6	MVE 8000/8N-FD-80AX A	80	8	8,037	900	456.3
416.5	MVE 9700/8N-FD-80AX A	80	8	9,573	900	512.1
838.5	MVE 19500/8N-FD-90BP A	90	8	19,274	900	875.5
962.7	MVE 22000/8N-FD-91BP A	91	8	22,127	900	928.1

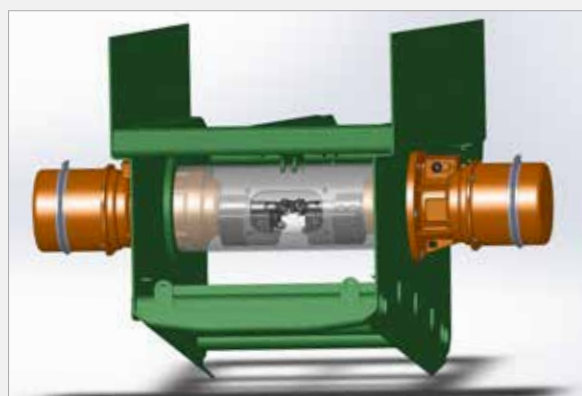
ELECTRIC FEATURES			
input power	Nominal Current	Ia/In	Cable Gland
Hp	A		
60 Hz	60 Hz [460]	60 Hz	
	A max. (Y)		
3.3	6.0	3.5	M25
6.7	10.0	3.6	M25
	A max. (Δ)		
9.1	7.8	3.5	M32
7.5	10.6	3.5	M32

# APPLICATIONS

The FD series have been designed to be used on horizontal, inclined, mobile or fixed vibrating screens. In fact, thanks to their design and performance they can be used on many applications.

## LIST OF APPLICATIONS

- Circular / elliptical motion screen
- Circular motion inclined feeders
- Dewatering screen
- Scalping screen
- Vibrating machines and plants for aggregates, soil and minerals processing



Horizontal screen with two FD

# DIMENSIONAL SPECIFICATIONS



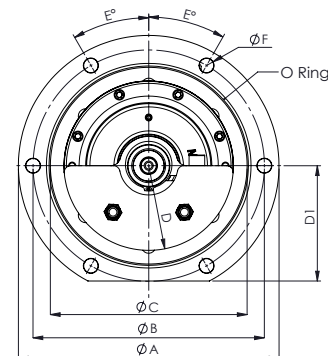
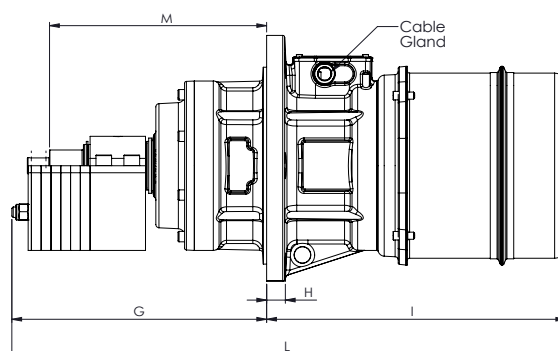
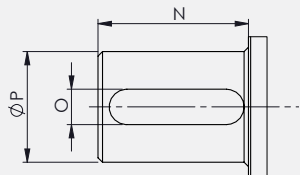
6 POLES		DIMENSIONAL SPECIFICATIONS (inches)															
Model	Size	Holes	Ø A	Ø B	Ø C	D	Ø D1	E°	Ø F	G	H	I	L	M	O Ring	Screw	Shaft Edge
60hz US.Market			In	In	In	In	In	In	degrees	In	In	In	In	In			
MVE 11700/6N-FD-80AX A	80	6	15.75	13.98	11.89	5.12	6.97	30	0.87	15.31	1.10	19.72	35.04	13.11	41200	7/8"	a
MVE 14500/6N-FD-80AX A	80	6	15.75	13.98	11.89	5.12	6.97	30	0.87	16.89	1.10	20.51	37.40	13.11	41200		a
																	b
MVE 19000/6N-FD-90BP A	90	12	22.05	19.69	15.75	7.09	10.24	25/27.5	0.87	14.80	1.18	18.11	32.91	13.27	61600		b
MVE 27000/6N-FD-91BP A	91	12	22.05	19.69	15.75	7.09	10.24	25/27.5	0.87	18.05	1.18	20.59	38.64	15.43	61600		

8 POLES		DIMENSIONAL SPECIFICATIONS (inches)															
Model	Size	Holes	Ø A	Ø B	Ø C	D	Ø D1	E°	Ø F	G	H	I	L	M	O Ring	Screw	Shaft Edge
60hz US.Market			In	In	In	In	In	In	degrees	In	In	In	In	In			
MVE 8000/8N-FD-80AX A	80	6	15.75	13.98	11.89	5.12	6.97	30	0.87	15.71	1.10	19.72	Holes	13.11	41200	7/8"	a
MVE 9700/8N-FD-80AX A	80	6	15.75	13.98	11.89	5.12	6.97	30	0.87	18.07	1.10	20.51	38.58	13.11	41200		a
MVE 19500/8N-FD-90BP A	90	12	22.05	19.69	15.75	7.09	10.24	25/27.5	0.87	17.36	1.18	18.11	35.47	13.27	61600		b
MVE 22000/8N-FD-91BP A	91	12	22.05	19.69	15.75	7.09	10.24	25/27.5	0.87	19.23	1.18	20.59	39.80	15.43	61600		b

## SHAFT EDGE

### DIMENSIONAL SPECIFICATIONS (inches)

Type	N	O	Ø P
a	1.34	0.31	0.98
b	1.42	0.47	1.57
Tolerances	± 0.2	H8	g6



# ADVANTAGES

## DRASTIC REDUCTION OF MAINTENANCE

Maintenance Free. The FD series is greased for life, so lubrication is no longer needed during maintenance.

## PLUG & PLAY

The installation of the motors on the application is very simple and fast : in case of extraordinary maintenance, downtime are reduced.

## MODULARITY

The use of FD requires few structural elements : both the design phase and the realization of the plant are made simpler.

## AN INFILTRATION-PROOF SYSTEM

The FD motors are IP66 : it means that in case you need to replace it, the operations can be performed directly on site without worrying about water infiltration and dust.

## BUILT TO LAST

The FD series has been designed and built with the aim of reaching a life time of more than 20,000 hours, in any condition.

## VERSATILE

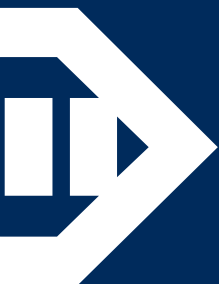
The FD Series can be used with inverters making it a versatile tool and able to meet all the screening requirements.

## MVE-FD

PROBLEM SOLVING	Avoids the use of through shafts with oil lubrication system.
-----------------	---

## FEATURES

INPUT VOLTAGE	400V (50Hz) or 460V (60Hz)
AMBIENT TEMPERATURE	-20 °C / + 40 °C
ENCLOSURE PROTECTION	IP 66
THERMAL PROTECTION	PTC Termistor 130 °C
INSULATION CLASS	F



# WHEN YOU NEED IT, WHERE YOU NEED IT

## THE WORLDWIDE LEADER IN VIBRATION TECHNOLOGY



### OLI WORLDWIDE

OLI Australia  
OLI Benelux  
OLI Brazil  
OLI China  
OLI France

OLI Germany  
OLI India  
OLI Italy  
OLI Malta  
OLI Middle East

OLI Nordic  
OLI Russia  
OLI South Africa  
OLI Spain  
OLI Thailand

OLI Turkey  
OLI UK  
OLI USA



**OLI VIBRATOR**

4070 Buford Hwy, Suite # 5  
Duluth GA

770-622-1494

sales@olivibrator.com

**WWW.OLIVIBRA.US**

### OLI Headquarters

Medolla (MO) - Italy

info@olivibra.com

**WWW.OLIVIBRA.COM**

